

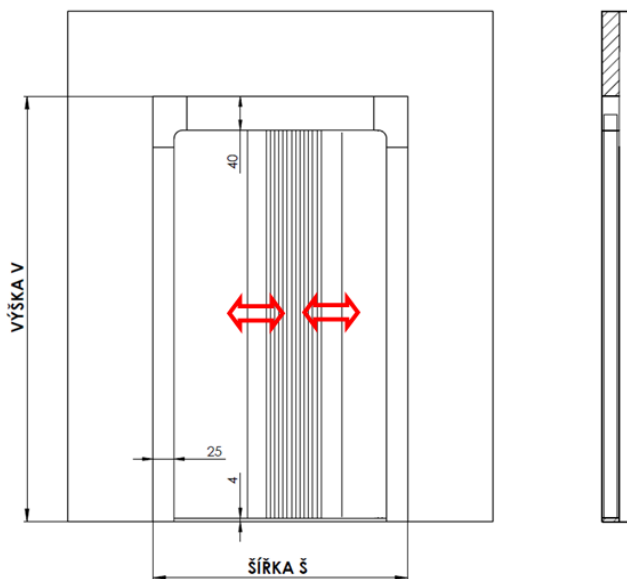
PS3 V PLEATED INSECT SCREEN

1. MEASUREMENT

1.1. Measurement for reveal

Measure the width and height of the opening to which the screen is to be inserted. Measure in three places, record the smallest measurement.

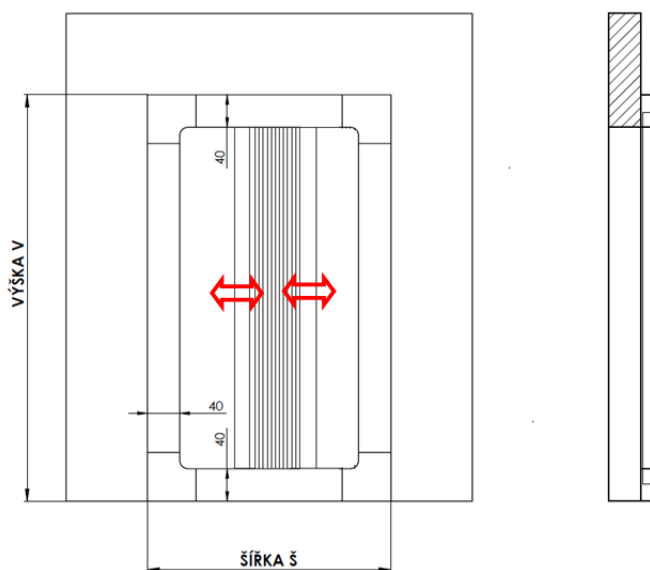
VÝŠKA V – HEIGHT H
ŠÍŘKA $Š$ – WIDTH W



1.2. Measurement for frame

Measure the outer dimensions of the screen.

The standard delivery of the screen includes the 10×20 mm profile which may serve as a false sill. It is not part of the screen manufacturing height.



2. INSTALLATION

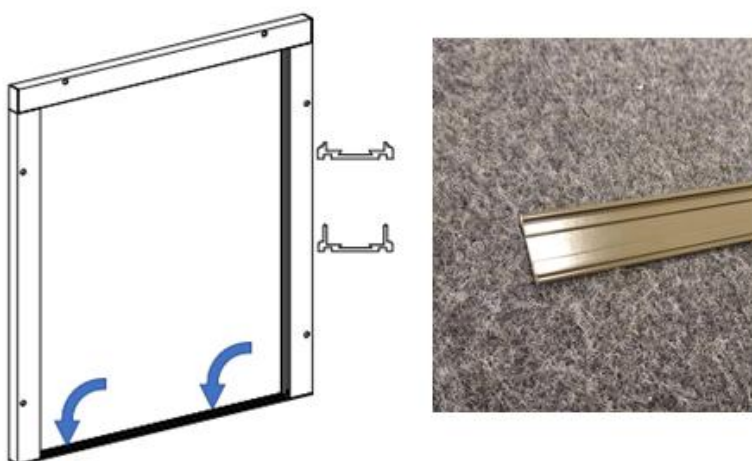
2.1. INSTALLATION TO REVEAL

2.1.1. Installing the frame

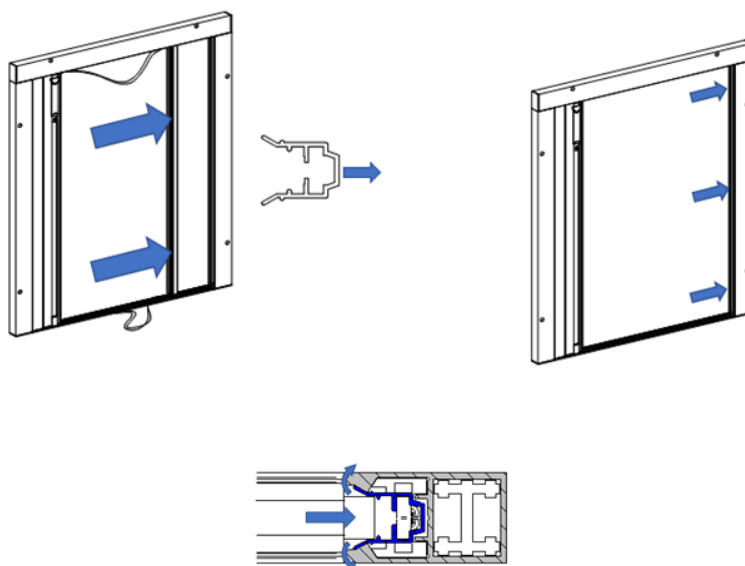
Remove the protective film and attach both the upper and the lower profiles to the place of installation. Adjust any length deviations by moving the plastic corner pieces. Insert the side vertical profile to the right side and drill the holes for fastening the profile, then do the same for the left profile. Remove the profiles.



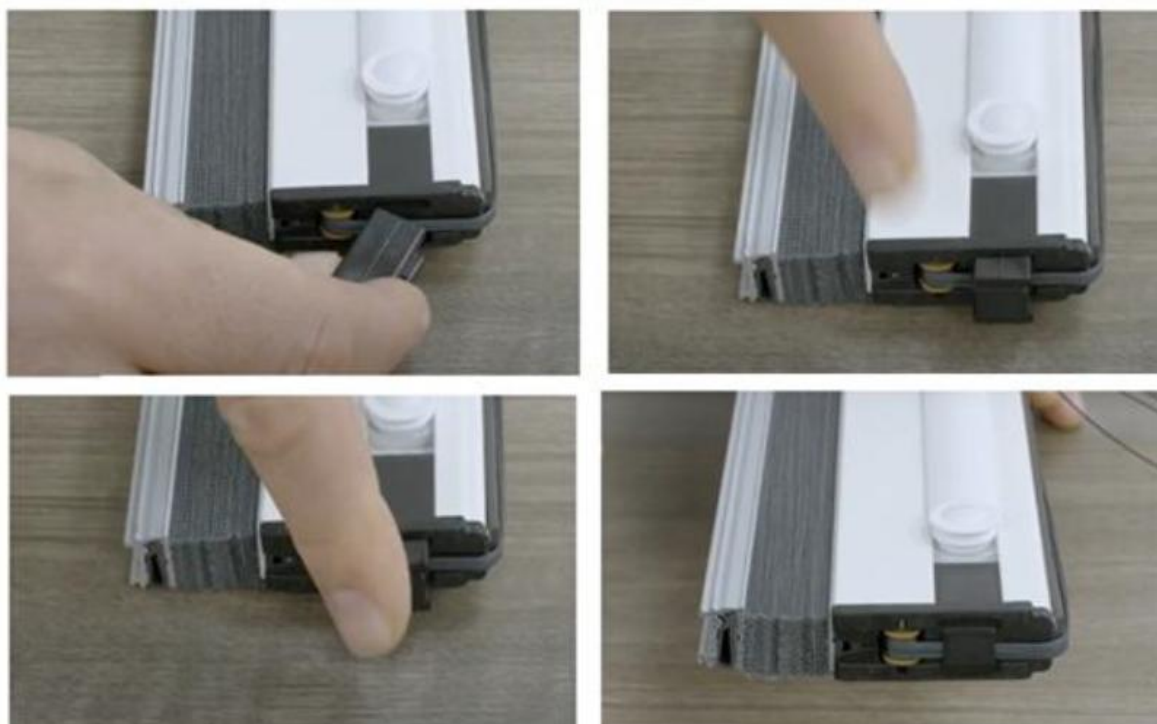
2.1.2. Installing the lower guide profile



2.1.3. Installing the vertical magnet profiles



2.1.4. Locking the moving rail cords



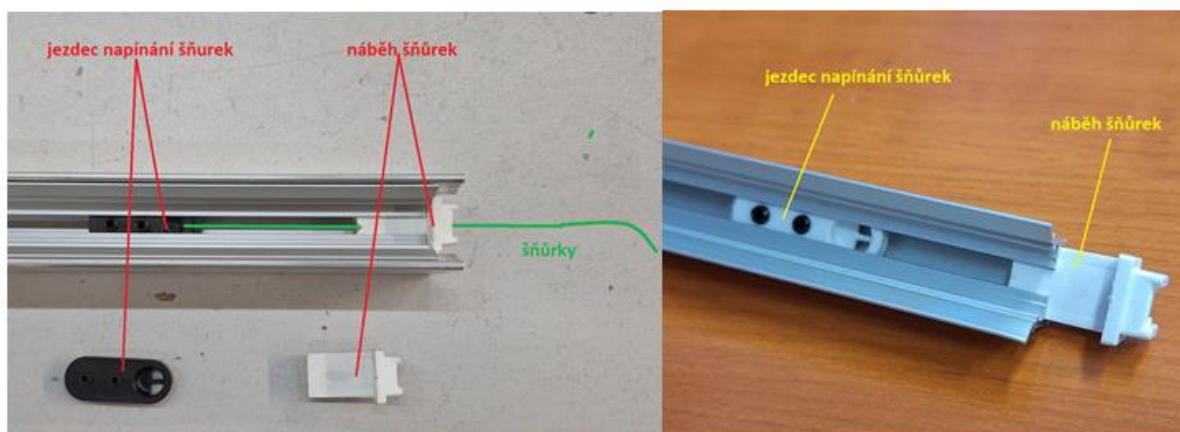
Fit the plastic component from below to the chambers of the lower carriage under the moving rail. The cords must be under the plastic!

2.1.5. Inserting and fastening the insect screen KIT

Insert the KIT packet with the screen and two moving rails into the profiles. Move the packet with the screen to the centre.



2.1.6. Adjusting the tension cords



jezdec napínání šňůrek – cord tensioning slider
náběh šňůrek – cord guide
šňůrky – cords

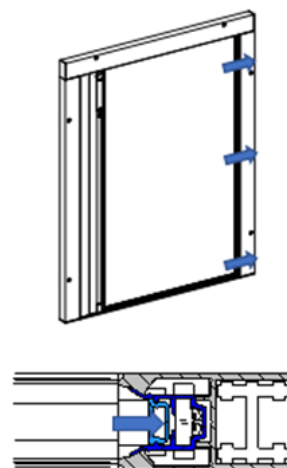
Adjust the cord tension by moving the **upper** adjusting slider. Check the screen cord tensioning, shut and open the screen several times, fine-adjust the cord tensioning, if needed, by moving the upper or lower adjusting slider.

Adjust the cord tension by moving the **lower** adjusting slider. Check the screen cord tensioning, shut and open the screen several times, fine-adjust the cord tensioning, if needed, by moving the lower or upper adjusting slider.

The best procedure is as follows: one operator completely pushes the screen to the end position and holds the upper and lower parts of the screen, while the other operator uses the tightening sliders in the first magnet profile to tighten the screen. Repeat the procedure to tighten the cords for the other limit position of the kit.

2.1.7. Inserting the magnet rail

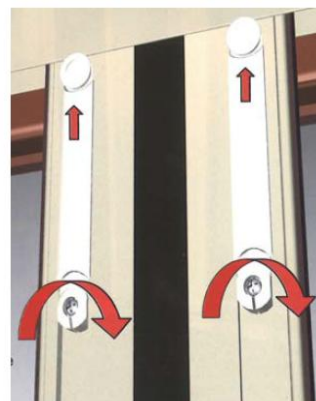
Check the correct polarity of the magnet against the KIT magnet polarity. Insert the magnets in the right and left magnet guide profiles. Push the magnet until it fits to its desired place. Always start pushing from the bottom.



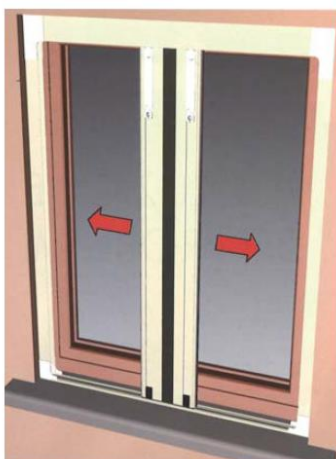
2.1.8. Plastic part with a spring

This component is recommended for doors that are not at right angles. If the door is at right angles, it is not necessary to use it.

Insert the plastic part with the guide rail spring in the upper part of the KIT profile. Slightly push the plastic part towards the upper profile and fasten with screw. The plastic part must be elastic.



2.1.9. Testing the correct operation



2.2. INSTALLATION TO FRAME

2.2.1. Insert the lower corner plastic part to the left starting profile.



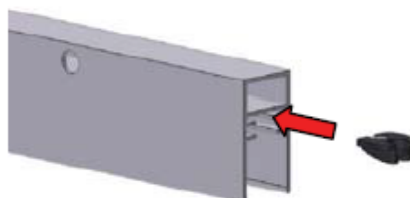
2.2.2. Insert the upper corner plastic part to the left starting profile.



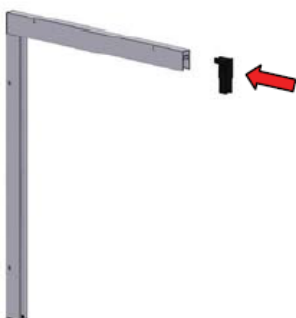
2.2.3. Insert the upper profile to the left corner plastic part.



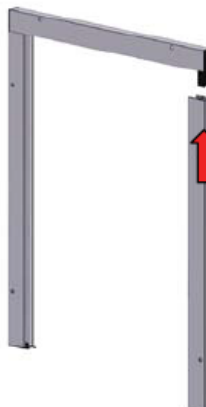
2.2.4. Insert the cursor – plastic part for cord tensioning – in the upper profile.



2.2.5. Insert the right upper corner plastic part to the upper profile.



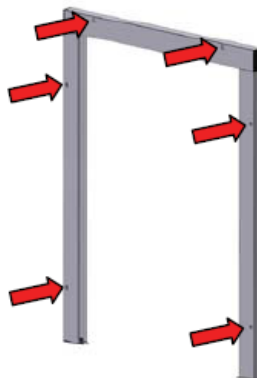
2.2.6. Insert the right-side profile to the corner plastic part.



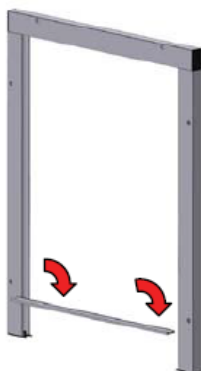
2.2.7. Insert the lower corner plastic part to the profile.



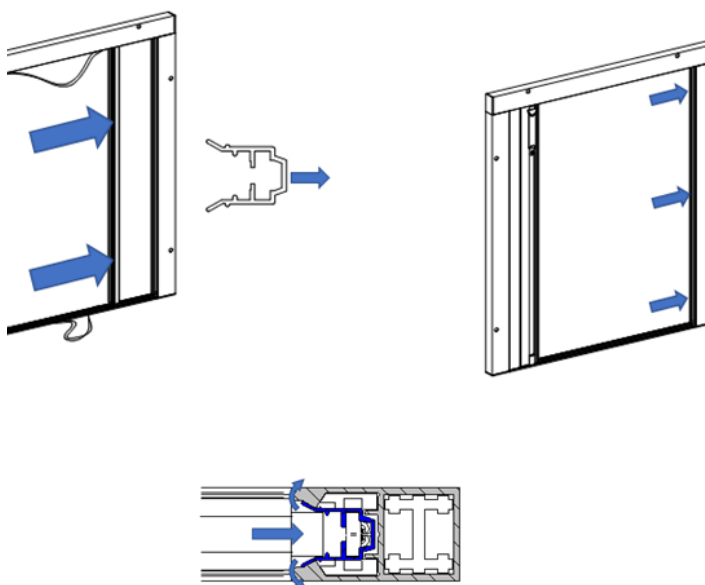
2.2.8. Fasten the frame to place of installation, observe perpendicularity.



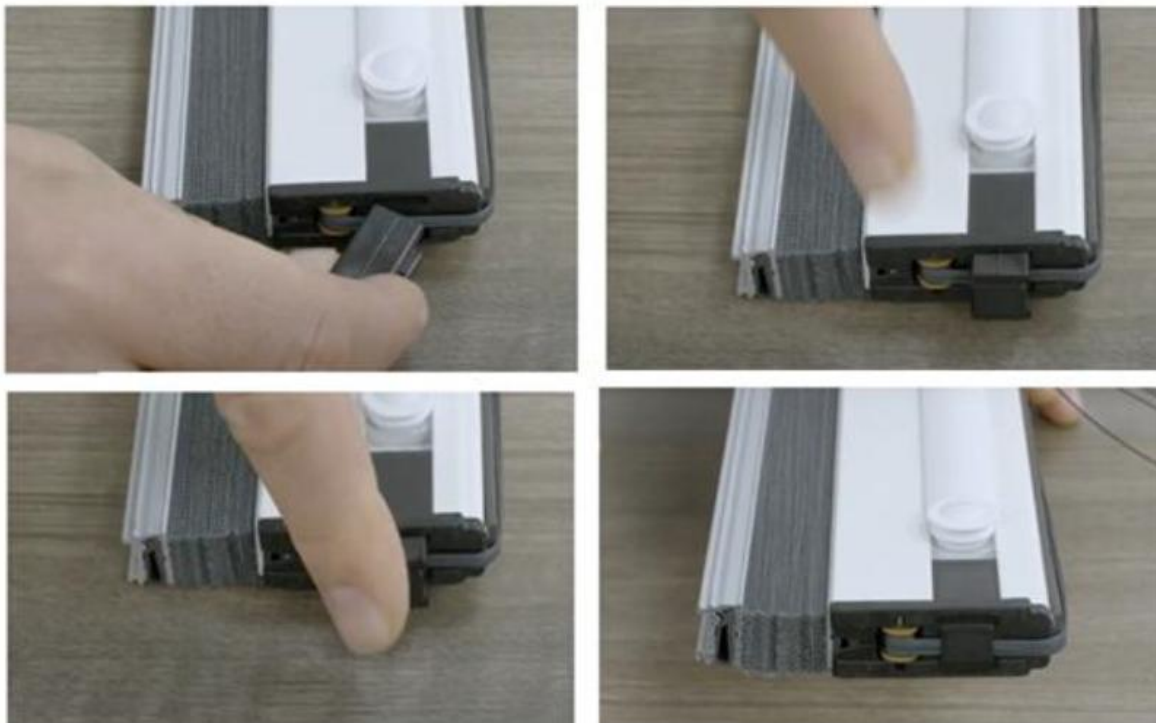
2.2.9. Place the lower profile to correct places of the lower plastic parts, fasten to the floor.



2.2.10. Inserting the vertical magnet profiles



2.2.11. Locking the moving rail cords



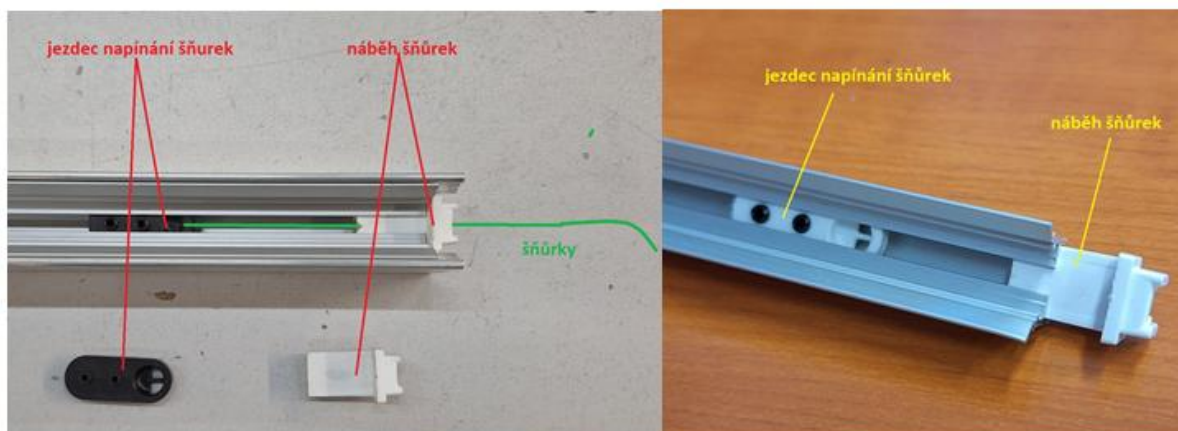
Fit the plastic component from below to the chambers of the lower carriage under the moving rail. The cords must be under the plastic!

2.2.12. Inserting and fastening the insect screen KIT

Insert the KIT packet with the screen and two moving rails into the profiles. Move the packet with the screen to the centre.



2.2.13. Adjusting the tension cords



jezdec napínání šňůrek – cord tensioning slider
náběh šňůrek – cord guide
šňůrky – cords

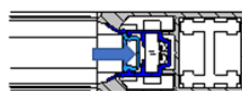
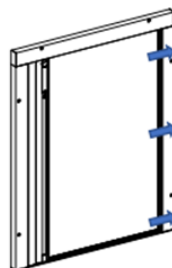
Adjust the cord tension by moving the **upper** adjusting slider. Check the screen cord tensioning, shut and open the screen several times, fine-adjust the cord tensioning, if needed, by moving the upper or lower adjusting slider.

Adjust the cord tension by moving the **lower** adjusting slider. Check the screen cord tensioning, shut and open the screen several times, fine-adjust the cord tensioning, if needed, by moving the lower or upper adjusting slider.

The best procedure is as follows: one operator completely pushes the screen to the end position and holds the upper and lower parts of the screen, while the other operator uses the tightening sliders in the first magnet profile to tighten the screen. Repeat the procedure to tighten the cords for the other limit position of the kit.

2.2.14. Inserting the magnet rail

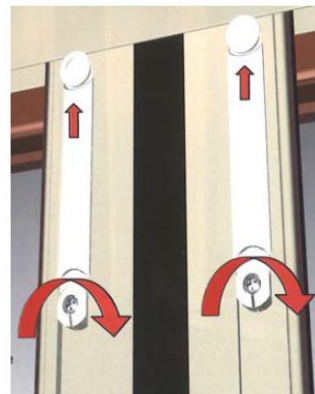
Check the correct polarity of the magnet against the KIT magnet polarity. Insert the magnets in the right and left magnet guide profiles. Push the magnet until it fits to its desired place. Always start pushing from the bottom.



2.2.15. Plastic part with a spring

This component is recommended for doors that are not at right angles. If the door is at right angles, it is not necessary to use it.

Insert the plastic part with the guide rail spring in the upper part of the KIT profile. Slightly push the plastic part towards the upper profile and fasten with screw. The plastic part must be elastic.



2.2.16. Testing the correct operation



2.2.17. Fit the blanks to the holes

